



TOYOTA

2023 Camry

2023 CAMRY

Get the most out of every drive, every day.

The 2023 Toyota Camry keeps the convenience of a midsize sedan and delivers a drive that amplifies the fun. With you in mind, Camry comes in a wide range of models, so there's a perfect match for you. Whether giving your adventures a confidence boost with available All-Wheel Drive (AWD) capability or taking your daily commutes as far as they can with hybrid efficiency, there's a Camry fit for your lifestyle.



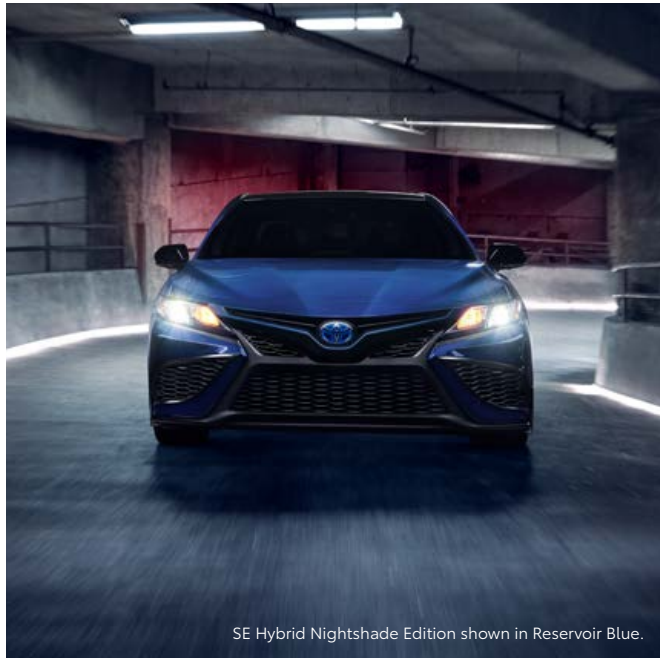
XSE Hybrid shown in Supersonic Red with Midnight Black Metallic roof.¹



XSE Hybrid shown in Celestial Silver Metallic with Midnight Black Metallic roof.¹



See numbered footnotes in Disclosures section.



PERFORMANCE

More than capable.

By taking advantage of the light and strong Toyota New Global Architecture (TNGA) platform, Camry is engineered for optimized handling and ride quality. And with a low, wide stance, Camry delivers a crisp and responsive feel. Indulge your sporty side and take the long way home.

Impressive 4-cylinder and V6 engines

Camry offers a compelling choice of gasoline engines: a proficient 2.5-liter Dynamic Force 4-cylinder and a robust 3.5-liter V6, each delivering a quality blend of performance and efficiency.

Hybrid performance

Get the best of both worlds. Camry Hybrid's Dynamic Force 4-cylinder engine, along with a proven electric motor and smooth-shifting transmission, produces ample torque and has an EPA-estimated rating of 46 mpg combined.² And with available 19-in. wheels, Camry XSE Hybrid proves it doesn't sacrifice style.

All-Wheel Drive

Available All-Wheel Drive (AWD) performance gives you peace of mind for days that are less than perfect. When sensing slippage at the front wheels, Camry AWD can send up to 50% of the torque to the rear wheels for more grip in gravel, rain or snow.





TRD

Not your average four-door.

We've turned our Toyota Racing Development (TRD) engineers loose on Camry, improving brakes, braces, and track-tuned suspension. Aerodynamic elements, from the front splitter and the side aero skirts to the rear diffuser and spoiler, boost Camry TRD's bold impression and help improve high-speed stability.



TRD 19-in. alloy wheels with red-painted calipers

Matte-black alloy wheels on TRD not only look good, but also reduce weight and enhance steering responsiveness. Large 12.9-in.-diameter front rotors and red-painted dual-piston front calipers are designed to give impressive stopping power on every twist and turn.



TRD purposeful stance

TRD-tuned shocks help improve body control, handling agility and steering precision. Thicker underbody braces increase torsional rigidity, and unique coil springs not only drop the vehicle .60 inches for a lower center of gravity, but also enhance the aero kit's downforce and aggressive look.



TRD cat-back dual exhaust

Hit the gas and enjoy the sound of TRD's standard 301-hp 3.5L V6. The cat-back dual exhaust reduces back pressure and helps optimize efficiency and power. Polished stainless steel TRD exhaust tips punctuate its athletic look.

DESIGN

Leave a lasting impression.

Camry's powerful stance and available black front grille with sport mesh insert announce your arrival with authority. At night, you'll immediately notice Camry XLE and XSE's LED headlights and fully integrated LED Daytime Running Lights (DRL) that add an illuminating touch.

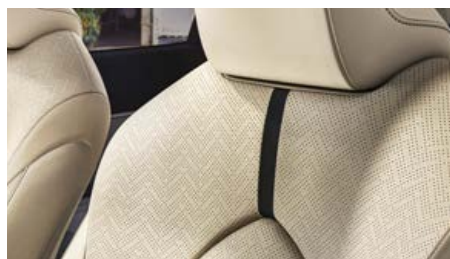


SE shown in Midnight Black Metallic. Prototype shown.



Camry SE Nightshade Edition

Show off Camry's dark side with Camry SE Nightshade Edition. Available in both gas and hybrid powertrains, this special edition is designed to be evocative. From unique 19-in. TRD matte bronze-finished alloy wheels to its Midnight Black Metallic, Ice Cap or new Reservoir Blue exterior colors, get ready to impress.



Seat details

A sedan that speaks to your sense of style. Such finely crafted details, like the herringbone seat pattern featured on XLE, ensure Camry will leave a lasting impression.



Floating touchscreen display

With Camry's perfectly placed steering wheel controls, everything you want is right at your fingertips. The floating display with an available 9-in. multimedia touchscreen offers Apple CarPlay^{®3} and Android Auto^{™4} compatibility with applicable smartphone devices.

Technology that keeps up with you.

Take advantage of smart and convenient technologies designed to simplify your everyday life. Trial periods are available on select models for the listed connected services. Subscriptions required after trial.*⁵ 4G network dependent.



Toyota App

With active applicable Connected Services⁵ subscriptions, the Toyota app⁶ allows you to stay connected to your Camry wherever you go. Available for Apple^{®7} and Android^{™8} devices.

- ✓ Remote Vehicle Start¹⁶ and Lock/Unlock Doors
- ✓ Check Up on Your Toyota's Health
- ✓ Schedule a Service Appointment
- ✓ Shop for Genuine Toyota Parts and Accessories
- ✓ Make a Payment With Your TFS Account



Safety Connect[®]

Round-the-clock help when the unexpected happens.⁹

- ✓ Emergency Assistance Button (SOS)
- ✓ Enhanced Roadside Assistance¹⁰
- ✓ Automatic Collision Notification
- ✓ Stolen Vehicle Locator¹¹



Service Connect

Being proactive to help keep your vehicle in peak condition.¹²

- ✓ Vehicle Health Report
- ✓ Vehicle Maintenance Alert
- ✓ Maintenance Reminder



Wi-Fi Connect

Turn your Toyota into a hotspot with 4G connectivity.¹³

- ✓ AT&T Hotspot



Dynamic Navigation

Dynamic Navigation¹⁴ provides you with the most up-to-date map data, routes and points of interest (POIs) on your vehicle's factory-installed navigation system, through real-time updates downloaded from the Cloud.

- ✓ Dynamic Map
- ✓ Dynamic Route
- ✓ Dynamic POI



Destination Assist

Destination Assist¹⁵ provides drivers 24-hour access to a live agent who can provide directions through the vehicle's factory-installed navigation system to an address or point of interest.



Remote Connect

Manage your vehicle through the Toyota app, including Remote Start and much more.¹⁶

- ✓ Remote Vehicle Start
- ✓ Unlock/Lock
- ✓ Remote Notifications
- ✓ Guest Driver
- ✓ Smartwatch Compatibility¹⁷
- ✓ Amazon Alexa¹⁸ and Google Assistant[™]-Enabled¹⁹ Device Capability

*To view included trial details, please visit toyota.com/connected-services.



XSE Hybrid interior shown in Black leather trim.

AUDIO MULTIMEDIA

Amplify your drive.

Enhance every drive with an experience that's all about you. Whether enjoying the sounds of your favorite soundtrack or interacting with an interface that you're familiar with, you'll always be surrounded by comfort.



XSE Hybrid interior shown in Black leather trim.
Screen depiction accurate at time of posting.



Apple CarPlay®

Bring along a familiar face. With Camry's Apple CarPlay^{®3} compatibility, you can use your compatible iPhone^{®20} with the multimedia system to get directions, make calls, send and receive messages and listen to music, all while staying focused behind the wheel.



Android Auto™

Stay connected on the road. By connecting your compatible Android^{™8} phone with the audio multimedia system, Android Auto^{™4} lets you access your Google Assistant^{™19} get real-time traffic alerts, make and receive phone calls, listen to your favorite soundtrack and more.



SiriusXM® Platinum Plan 3-month trial

SiriusXM^{®21,22} has premium entertainment that you won't hear anywhere else. With the Platinum Plan, you get 425+ channels, including 165+ channels in your vehicle, to enjoy ad-free music, plus sports, news, talk, comedy and more. Experience even more on the SXM App, featuring expertly curated podcasts, Xtra channels of music, personalized Pandora[®] stations, SiriusXM[®] video and more.



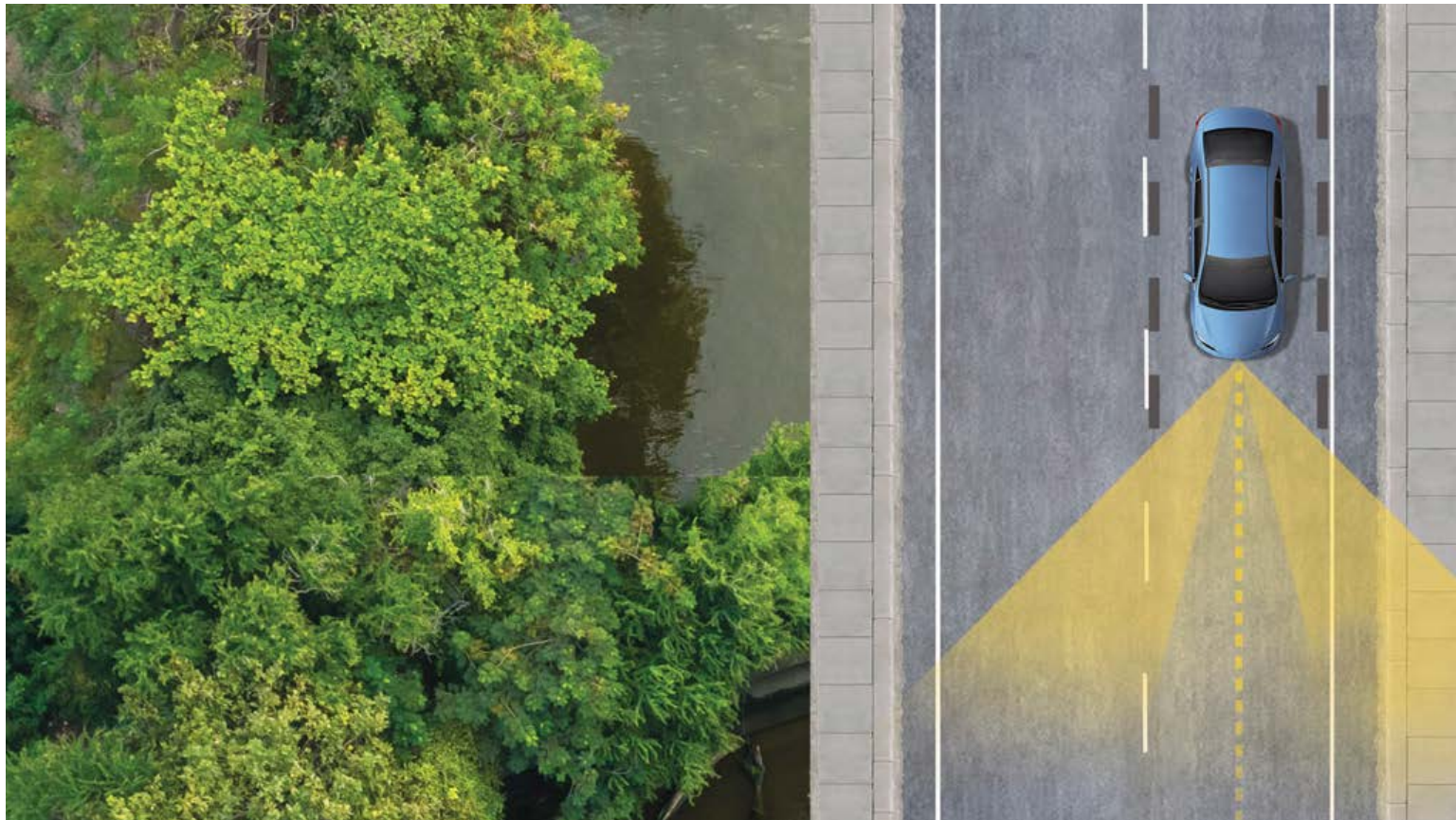
Amazon Alexa

Almost anywhere the road takes you, Amazon Alexa¹⁸ connectivity follows. With a smartphone connection and the Toyota+Alexa app, all you have to do is ask Alexa to play music, listen to audiobooks, hear the news, check weather, control smart-home devices and more.



JBL®

Immerse yourself in quality sound with Camry's available JBL^{®23} Audio system. A 9-speaker, 800-watt audio system, equipped with a subwoofer, it provides phenomenal sound that amplifies every drive.



TOYOTA SAFETY SENSE™ 2.5+ (TSS 2.5+)

Peace of mind comes standard.

Toyota Safety Sense™ 2.5+ (TSS 2.5+)²⁴ is the latest bundle of active safety features included on many new Toyota vehicles at no additional cost. These innovative features were designed to help protect you and your passengers from harm.



Pre-Collision System with Pedestrian Detection²⁵



Dynamic Radar Cruise Control²⁶



Lane Departure Alert with Steering Assist²⁷



Automatic High Beams²⁸



Lane Tracing Assist²⁹



Road Sign Assist³⁰

CAMRY MODELS



LE

Includes these key features

Mechanical/Performance

- ✓ 2.5L 4-Cylinder with 203 hp
- ✓ 8-speed Electronically Controlled automatic Transmission with intelligence (ECT-i) with sequential shift mode
- ✓ Normal, Eco and Sport drive modes
- ✓ Available All-Wheel Drive (AWD)
- ✓ 28 city/39 highway/32 combined EPA-est. mpg²

Exterior Features

- ✓ Bi-LED combination headlights with auto on/off feature
- ✓ LED combination taillights with black trim
- ✓ Dark gray front grille
- ✓ 17-in. alloy wheels
- ✓ Roof-mounted shark-fin antenna
- ✓ Single exhaust

Interior Features

- ✓ Seating for five
- ✓ Dual zone automatic climate control
- ✓ Fabric-trimmed seats
 - 8-way power-adjustable driver's seat
 - 60/40 split fold-down rear seat
- ✓ 4.2-in. Multi-Information Display (MID)
- ✓ Remote keyless entry system
- ✓ Linear dark interior trim
- ✓ Three USB ports³¹

Audio Multimedia

- ✓ Audio includes:
 - 7-in. touchscreen and six speakers
 - Android Auto^{TM4} & Apple CarPlay^{®3} compatible
 - SiriusXM^{®21} with 3-month Platinum Plan trial subscription²²
- ✓ Connected Services-capable.⁵ See toyota.com for details. (Dependent on 4G network.)

Safety Features

- ✓ Toyota Safety Sense 2.5+ (TSS 2.5+)²⁴
- ✓ Dynamic Radar Cruise Control (DRCC)²⁶
- ✓ Star Safety SystemTM
- ✓ Ten airbags³²
- ✓ Tire Pressure Monitor System (TPMS)³³

Packages/Options

- ✓ Convenience Package includes:
 - Smart Key System
 - HomeLink^{®34} universal transceiver
 - Auto-dimming rearview mirror
- ✓ Audio Upgrade Package includes:
 - Audio Plus with 9-in. touchscreen
 - Qi-compatible wireless charging³⁵
 - Rear-seat vents
- ✓ Cold Weather Package includes:
 - Heated front seats
 - Heated power outside mirrors
 - Heated steering wheel
- ✓ Blind Spot Monitor (BSM)³⁶ with Rear Cross-Traffic Alert (RCTA)³⁷
- ✓ Power tilt/slide moonroof



XLE

Adds to or replaces features offered on LE

Mechanical/Performance

- ✓ Available All-Wheel Drive (AWD)
- ✓ 27 city/38 highway/31 combined EPA-est. mpg²

Exterior Features

- ✓ LED headlights and LED DRL with auto on/off feature
- ✓ LED taillights with black trim
- ✓ Dark gray front grille with chrome accents
- ✓ 18-in. dark gray machined-finish alloy wheels
- ✓ Color-keyed heated power outside mirrors with turn-signal indicators
- ✓ Single exhaust with chrome tip

Interior Features

- ✓ Leather-trimmed seats
 - Heated front seats
 - Rear adjustable headrests
- ✓ Leather-trimmed tilt/telescopic steering wheel
- ✓ 7-in. Multi-Information Display (MID)
- ✓ Smart Key System with Push Button Start
- ✓ Qi-compatible wireless charging³⁵
- ✓ Wood inlay interior trim
- ✓ Ambient interior lighting

Audio Multimedia

- ✓ Audio Plus includes:
 - 9-in. touchscreen and six speakers
 - Android Auto^{TM4} & Apple CarPlay^{®3} compatible
 - SiriusXM^{®21} with 3-month Platinum Plan trial subscription²²
- ✓ Connected Services-capable.⁵ See toyota.com for details. (Dependent on 4G network.)

Safety Features

- ✓ Toyota Safety Sense 2.5+ (TSS 2.5+)²⁴
- ✓ Full-Speed Dynamic Radar Cruise Control (DRCC)²⁶
- ✓ Blind Spot Monitor (BSM)³⁶ with Rear Cross-Traffic Alert (RCTA)³⁷
- ✓ Star Safety SystemTM
- ✓ Ten airbags³²
- ✓ Tire Pressure Monitor System (TPMS)³³ with direct pressure readout

Packages/Options

- ✓ Navigation Upgrade Package¹⁴ includes:
 - Premium Audio with Dynamic Navigation¹⁴
 - Nine JBL^{®23} speakers including subwoofer and amplifier
- ✓ Driver Assist Package includes:
 - 10-in. color Head-Up Display (HUD)
 - Panoramic View Monitor³⁸
 - Front and Rear Parking Assist with Automatic Braking (PA w/AB)³⁹
 - Ventilated front seats
- ✓ Cold Weather Package includes:
 - Heated steering wheel
- ✓ Panoramic glass roof with front power tilt/slide moonroof



XLE V6

Adds to or replaces features offered on XLE

Mechanical/Performance

- ✓ 3.5L V6 with 301 hp
- ✓ 22 city/33 highway/26 combined EPA-est. mpg²

Exterior Features

- ✓ Panoramic glass roof with front power tilt/slide moonroof
- ✓ Dual exhaust with chrome tips

Interior Features

- ✓ 10-in. color Head-Up Display (HUD)
- ✓ Dual sun visors with sliding extensions and illuminated vanity mirrors

Audio Multimedia

- ✓ Audio Plus with JBL^{®23} includes:
 - 9-in. touchscreen and nine JBL^{®23} speakers including subwoofer and amplifier
 - Android Auto^{TM4} & Apple CarPlay^{®3} compatible
 - SiriusXM^{®21} with 3-month Platinum Plan trial subscription²²
- ✓ Connected Services-capable.⁵ See toyota.com for details. (Dependent on 4G network.)

Safety Features

- ✓ Toyota Safety Sense 2.5+ (TSS 2.5+)²⁴
- ✓ Full-Speed Dynamic Radar Cruise Control (DRCC)²⁶
- ✓ Blind Spot Monitor (BSM)³⁶ with Rear Cross-Traffic Alert (RCTA)³⁷
- ✓ Star Safety SystemTM
- ✓ Ten airbags³²
- ✓ Tire Pressure Monitor System (TPMS)³³ with direct pressure readout

Packages/Options

- ✓ Navigation Upgrade Package¹⁴ includes:
 - Premium Audio with Dynamic Navigation¹⁴
- ✓ Driver Assist Package includes:
 - Panoramic View Monitor³⁸
 - Front and Rear Parking Assist with Automatic Braking (PA w/AB)³⁹
 - Ventilated front seats
- ✓ Cold Weather Package includes:
 - Heated steering wheel

CAMRY MODELS



SE

Includes these key features

Mechanical/Performance

- ✓ Available All-Wheel Drive (AWD)
- ✓ Normal, Eco and Sport drive modes
- ✓ 28 city/39 highway/32 combined EPA-est. mpg²

Exterior Features

- ✓ Bi-LED combination headlights with black accents and auto on/off feature
- ✓ Black front grille with sport mesh lower insert
- ✓ Color-keyed sport side rocker panels
- ✓ 18-in. black machined-finish alloy wheels
- ✓ Color-keyed rear spoiler
- ✓ Color-keyed heated power outside mirrors with turn signal indicators
- ✓ Single exhaust with dual chrome tips

Interior Features

- ✓ Dual zone automatic climate control
- ✓ Sport SofTex®-trimmed⁴¹ front seats
- ✓ Leather-trimmed tilt/telescopic steering wheel with paddle shifters

Audio Multimedia

- ✓ Audio includes:
 - 7-in. touchscreen and six speakers
 - Android Auto™⁴⁴ & Apple CarPlay®⁴³ compatible
 - SiriusXM®²¹ with 3-month Platinum Plan trial subscription²²
- ✓ Connected Services-capable.⁵ See toyota.com for details. (Dependent on 4G network.)

Safety Features

- ✓ Toyota Safety Sense 2.5+ (TSS 2.5+)²⁴
- ✓ Dynamic Radar Cruise Control (DRCC)²⁶
- ✓ Star Safety System™
- ✓ Ten airbags³²
- ✓ Tire Pressure Monitor System (TPMS)³³ with direct pressure readout

Packages/Options

- ✓ Convenience Package includes:
 - Smart Key System
 - HomeLink®³⁴ universal transceiver
 - Auto-dimming rearview mirror
- ✓ Audio Upgrade Package includes:
 - Audio Plus with 9-in. touchscreen
 - Qi-compatible wireless charging³⁵
 - Rear-seat vents
- ✓ Cold Weather Package includes:
 - Heated front seats
 - Heated power outside mirrors
 - Heated steering wheel
- ✓ Blind Spot Monitor (BSM)³⁶ with Rear Cross-Traffic Alert (RCTA)³⁷
- ✓ Power tilt/slide moonroof



SE Nightshade Edition

Adds to or replaces features offered on SE

Mechanical/Performance

- ✓ Available All-Wheel Drive (AWD)
- ✓ Available SE Hybrid Nightshade Edition
- ✓ 28 city/39 highway/32 combined EPA-est. mpg²

Exterior Features

- ✓ Black-painted heated power outside mirrors with turn-signal indicators and window trim
- ✓ 19-in. TRD matte bronze-finished alloy wheels
- ✓ Black-painted rear spoiler
- ✓ Black-painted shark fin antenna
- ✓ Black-trimmed headlights and taillights
- ✓ Black rear Toyota emblem and "CAMRY" lettering
- ✓ Black SE grade badge

Interior Features

- ✓ Sport SofTex®-trimmed⁴¹ front seats
- ✓ Leather-trimmed tilt/telescopic steering wheel with paddle shifters

Audio Multimedia

- ✓ Audio includes:
 - 7-in. touchscreen and six speakers
 - Android Auto™⁴⁴ & Apple CarPlay®⁴³ compatible
 - SiriusXM®²¹ with 3-month Platinum Plan trial subscription²²
- ✓ Connected Services-capable.⁵ See toyota.com for details. (Dependent on 4G network.)

Safety Features

- ✓ Toyota Safety Sense 2.5+ (TSS 2.5+)²⁴
- ✓ Dynamic Radar Cruise Control (DRCC)²⁶
- ✓ Star Safety System™
- ✓ Ten airbags³²
- ✓ Tire Pressure Monitor System (TPMS)³³ with direct pressure readout

Packages/Options

- ✓ Convenience Package includes:
 - Smart Key System
 - HomeLink®³⁴ universal transceiver
 - Auto-dimming rearview mirror
- ✓ Blind Spot Monitor (BSM)³⁶ with Rear Cross-Traffic Alert (RCTA)³⁷



XSE

Adds to or replaces features offered on SE

Mechanical/Performance

- ✓ 2.5L 4-Cylinder with 206 hp
- ✓ Available All-Wheel Drive (AWD)
- ✓ 27 city/38 highway/31 combined EPA-est. mpg²

Exterior Features

- ✓ LED headlights with black trim, LED DRL with auto on/off feature
- ✓ LED taillights with black trim
- ✓ Gloss-black front grille with sport mesh lower insert
- ✓ 19-in. gloss-black alloy wheels
- ✓ Dual exhaust with quad chrome tips

Interior Features

- ✓ Leather-trimmed seats
 - Heated front seats
 - Rear adjustable headrests
- ✓ 7-in. Multi-Information Display (MID)
- ✓ Smart Key System with Push Button Start
- ✓ Qi-compatible wireless charging³⁵
- ✓ Patterned metal interior trim
- ✓ Ambient interior lighting

Audio Multimedia

- ✓ Audio Plus includes:
 - 9-in. touchscreen and six speakers
 - Android Auto™⁴⁴ & Apple CarPlay®⁴³ compatible
 - SiriusXM®²¹ with 3-month Platinum Plan trial subscription²²
- ✓ Connected Services-capable.⁵ See toyota.com for details. (Dependent on 4G network.)

Safety Features

- ✓ Toyota Safety Sense 2.5+ (TSS 2.5+)²⁴
- ✓ Full-Speed Range Dynamic Radar Cruise Control (DRCC)²⁶
- ✓ Blind Spot Monitor (BSM)³⁶ with Rear Cross-Traffic Alert (RCTA)³⁷
- ✓ Star Safety System™
- ✓ Ten airbags³²
- ✓ Tire Pressure Monitor System (TPMS)³³ with direct pressure readout

Packages/Options

- ✓ Navigation Upgrade Package¹⁴ includes:
 - Premium Audio with Dynamic Navigation¹⁴
 - Nine JBL®²³ speakers including subwoofer and amplifier
- ✓ Driver Assist Package includes:
 - 10-in. color Head-Up Display (HUD)
 - Panoramic View Monitor²⁸
 - Front and Rear Parking Assist with Automatic Braking (PA w/AB)³⁹
 - Ventilated front seats
- ✓ Cold Weather Package includes:
 - Heated steering wheel
- ✓ Panoramic glass roof with front power tilt/slide moonroof
- ✓ Two-tone exterior color (color-keyed body with black roof)¹

CAMRY MODELS



XSE V6

Adds to or replaces features offered on XSE

Mechanical/Performance

- ✓ 3.5L V6 with 301 hp
- ✓ 22 city/32 highway/26 combined EPA-est. mpg²

Exterior Features

- ✓ Panoramic glass roof with front power tilt/slide moonroof

Interior Features

- ✓ 10-in. color Head-Up Display (HUD)
- ✓ Dual sun visors with sliding extensions and illuminated vanity mirrors

Audio Multimedia

- ✓ Audio Plus with JBL®²³ includes:
 - 9-in touchscreen and nine JBL®²³ speakers including subwoofer and amplifier
 - Android Auto™⁴ & Apple CarPlay®³ compatible
 - SiriusXM®²¹ with 3-month Platinum Plan trial subscription²²
- ✓ Connected Services-capable.⁵ See toyota.com for details. (Dependent on 4G network.)

Safety Features

- ✓ Toyota Safety Sense 2.5+ (TSS 2.5+)²⁴
- ✓ Full-Speed Range Dynamic Radar Cruise Control (DRCC)²⁶
- ✓ Star Safety System™
- ✓ Ten airbags³²
- ✓ Tire Pressure Monitor System (TPMS)³³ with direct pressure readout

Packages/Options

- ✓ Navigation Upgrade Package¹⁴ includes:
 - Premium Audio with Dynamic Navigation¹⁴
- ✓ Driver Assist Package includes:
 - Panoramic View Monitor³⁸
 - Front and Rear Parking Assist with Automatic Braking (PA w/AB)³⁹
 - Ventilated front seats
- ✓ Cold Weather Package includes:
 - Heated steering wheel
- ✓ Two-tone exterior color (color-keyed body with black roof)¹



TRD

Adds to or replaces features offered on SE

Mechanical/Performance

- ✓ 3.5L V6 with 301 hp
- ✓ TRD track-tuned suspension
- ✓ 12.9-in. front disc brakes with red-painted calipers
- ✓ 22 city/31 highway/25 combined EPA-est. mpg²

Exterior Features

- ✓ Gloss-black front grille with sport mesh insert
- ✓ Black heated power outside mirrors with turn-signal indicators
- ✓ Black window trim
- ✓ 19-in. x 8.5-in. TRD matte-black alloy wheels
- ✓ TRD gloss-black pedestal rear spoiler
- ✓ TRD gloss-black front splitter, side aero skirts and rear diffuser
- ✓ TRD cat-back dual exhaust with polished stainless steel tips
- ✓ Red TRD badge

Interior Features

- ✓ TRD instrumentation with red-illuminated accents
- ✓ Sport SofTex®-trimmed⁴¹ front seats
 - Red seatbelts
 - TRD headrest logo
 - Fixed rear seat
- ✓ Leather-trimmed steering wheel with red stitching and paddle shifters
- ✓ Patterned metal interior trim
- ✓ Smart Key System with Push Button Start
- ✓ Aluminum sport pedals

Audio Multimedia

- ✓ Audio includes:
 - 7-in. touchscreen and six speakers
 - Android Auto™⁴ & Apple CarPlay®³ compatible
 - SiriusXM®²¹ with 3-month Platinum Plan trial subscription²²
- ✓ Connected Services-capable.⁵ See toyota.com for details. (Dependent on 4G network.)

Safety Features

- ✓ Toyota Safety Sense 2.5+ (TSS 2.5+)²⁴
- ✓ Full-Speed Range Dynamic Radar Cruise Control (DRCC)²⁰
- ✓ Blind Spot Monitor (BSM)³⁶ with Rear Cross-Traffic Alert (RCTA)³⁷
- ✓ Star Safety System™
- ✓ Ten airbags³²
- ✓ Tire Pressure Monitor System (TPMS)³³ with direct pressure readout

Options

- ✓ TRD Premium Audio with nine JBL®²³ speakers
- ✓ Two-tone exterior color (color-keyed body with black roof)¹
- ✓ All-season tires
- ✓ Summer tires

CAMRY HYBRID MODELS



LE Hybrid

Includes these key features

Mechanical/Performance

- ✓ Hybrid engine: 2.5L 4-Cylinder with 208 net hp
- ✓ Electronically controlled Continuously Variable Transmission (ECVT) with sequential shift mode
- ✓ Normal, Eco, EV⁴² and Sport drive modes
- ✓ 51 city/53 highway/52 combined EPA-est. mpg²

Exterior Features

- ✓ Bi-LED combination headlights with auto on/off feature
- ✓ LED combination taillights with black trim
- ✓ Dark gray front grille
- ✓ 16-in. steel wheels with wheel covers
- ✓ Roof-mounted shark-fin antenna

Interior Features

- ✓ Dual zone automatic climate control
- ✓ Fabric-trimmed seats
 - 8-way power-adjustable driver's seat
 - 60/40 split fold-down rear seat
- ✓ 4.2-in. Multi-Information Display (MID)
- ✓ Smart Key System with Push Button Start
- ✓ Linear dark interior trim
- ✓ Three USB ports³¹

Audio Multimedia

- ✓ Audio includes:
 - 7-in. touchscreen and six speakers
 - Android Auto™⁴ & Apple CarPlay®³ compatible
 - SiriusXM®²¹ with 3-month Platinum Plan trial subscription²²
- ✓ Connected Services-capable.⁵ See toyota.com for details. (Dependent on 4G network.)

Safety Features

- ✓ Toyota Safety Sense 2.5+ (TSS 2.5+)²⁴
- ✓ Full-Speed Range Dynamic Radar Cruise Control (DRCC)²⁶
- ✓ Star Safety System™
- ✓ Ten airbags³²
- ✓ Tire Pressure Monitor System (TPMS)³³ with direct pressure readout

Packages/Options

- ✓ Convenience Package includes:
 - HomeLink®³⁴ universal transceiver
 - Auto-dimming rearview mirror
- ✓ Audio Upgrade Package includes:
 - Audio Plus with 9-in. touchscreen
 - Qi-compatible wireless charging³⁵
- ✓ Cold Weather Package includes:
 - Heated front seats
 - Heated power outside mirrors
 - Heated steering wheel
- ✓ Blind Spot Monitor (BSM)³⁶ with Rear Cross-Traffic Alert (RCTA)³⁷
- ✓ Power tilt/slide moonroof

CAMRY HYBRID MODELS



SE Hybrid

Adds to or replaces features offered on LE Hybrid

Mechanical/Performance

- ✓ Hybrid engine: 2.5L 4-Cylinder with 208 net hp
- ✓ Sport-tuned suspension
- ✓ 44 city/47 highway/46 combined EPA-est. mpg²

Exterior Features

- ✓ Bi-LED combination headlights with black trim and auto on/off feature
- ✓ Black front grille with sport mesh lower insert
- ✓ Color-keyed sport side rocker panels
- ✓ 18-in. black machined-finish alloy wheels
- ✓ Color-keyed rear spoiler
- ✓ Color-keyed heated power outside mirrors with turn signal indicators
- ✓ Single exhaust with dual chrome tips

Interior Features

- ✓ Dual zone automatic climate control
- ✓ Sport SofTex®-trimmed⁴¹ front seats
- ✓ Leather-trimmed tilt/telescopic steering wheel with paddle shifters

Audio Multimedia

- ✓ Audio includes:
 - 7-in. touchscreen and six speakers
 - Android Auto™⁴ & Apple CarPlay®³ compatible
 - SiriusXM®²¹ with 3-month Platinum Plan trial subscription²²
- ✓ Connected Services-capable.⁵ See toyota.com for details. (Dependent on 4G network.)

Safety Features

- ✓ Toyota Safety Sense 2.5+ (TSS 2.5+)²⁴
- ✓ Full-Speed Range Dynamic Radar Cruise Control (DRCC)²⁶
- ✓ Star Safety System™
- ✓ Ten airbags³²
- ✓ Tire Pressure Monitor System (TPMS)³³ with direct pressure readout

Packages/Options

- ✓ Convenience Package includes:
 - HomeLink®³⁴ universal transceiver
 - Auto-dimming rearview mirror
- ✓ Audio Upgrade Package includes:
 - Audio Plus with 9-in. touchscreen
 - Qi-compatible wireless charging³⁵
- ✓ Cold Weather Package includes:
 - Heated front seats
 - Heated power outside mirrors
 - Heated steering wheel
- ✓ Blind Spot Monitor (BSM)³⁶ with Rear Cross-Traffic Alert (RCTA)³⁷
- ✓ Power tilt/slide moonroof



XLE Hybrid

Adds to or replaces features offered on LE Hybrid

Mechanical/Performance

- ✓ Hybrid engine: 2.5L 4-Cylinder with 208 net hp
- ✓ 44 city/47 highway/46 combined EPA-est. mpg²

Exterior Features

- ✓ LED headlights and LED DRL with auto on/off feature
- ✓ LED taillights with black trim
- ✓ Dark gray front grille with chrome accents
- ✓ 18-in. dark gray machined-finish alloy wheels
- ✓ Color-keyed heated power outside mirrors with turn-signal indicators

Interior Features

- ✓ Leather-trimmed seats
 - Heated front seats
 - Rear adjustable headrests
- ✓ Leather-trimmed tilt/telescopic steering wheel
- ✓ 7-in. Multi-Information Display (MID)
- ✓ Qi-compatible wireless charging³⁵
- ✓ Wood inlay interior trim
- ✓ Ambient interior lighting

Audio Plus includes:

- ✓ 9-in. touchscreen and six speakers
 - Android Auto™⁴ & Apple CarPlay®³ compatible
 - SiriusXM®²¹ with 3-month Platinum Plan trial subscription²²
- ✓ Connected Services-capable.⁵ See toyota.com for details. (Dependent on 4G network.)

Safety Features

- ✓ Toyota Safety Sense 2.5+ (TSS 2.5+)²⁴
- ✓ Full-Speed Range Dynamic Radar Cruise Control (DRCC)²⁶
- ✓ Blind Spot Monitor (BSM)³⁶ with Rear Cross-Traffic Alert (RCTA)³⁷
- ✓ Star Safety System™
- ✓ Ten airbags³²
- ✓ Tire Pressure Monitor System (TPMS)³³ with direct pressure readout

Packages/Options

- ✓ Navigation Upgrade Package¹⁴ includes:
 - Premium Audio with Dynamic Navigation¹⁴
 - Nine JBL®²³ speakers including subwoofer and amplifier
- ✓ Driver Assist Package includes:
 - 10-in. color Head-Up Display (HUD)
 - Panoramic View Monitor³⁸
 - Front and Rear Parking Assist with Automatic Braking (PA w/AB)³⁹
 - Ventilated front seats
- ✓ Cold Weather Package includes:
 - Heated steering wheel
- ✓ Power tilt/slide moonroof



XSE Hybrid

Adds to or replaces features offered on SE Hybrid

Mechanical/Performance

- ✓ Hybrid engine: 2.5L 4-Cylinder with 208 net hp
- ✓ 44 city/47 highway/46 combined EPA-est. mpg²

Exterior Features

- ✓ LED headlights with black trim, LED DRL with auto on/off feature
- ✓ LED taillights with black trim
- ✓ Gloss-black front grille with sport mesh lower insert
- ✓ 19-in. gloss-black alloy wheels

Interior Features

- ✓ Leather-trimmed seats
 - Heated front seats
 - Rear adjustable headrests
- ✓ 7-in. Multi-Information Display (MID)
- ✓ Qi-compatible wireless charging³⁵
- ✓ Patterned metal interior trim
- ✓ Ambient interior lighting

Audio Multimedia

- ✓ Audio Plus includes:
 - 9-in. touchscreen and six speakers
 - Android Auto™⁴ & Apple CarPlay®³ compatible
 - SiriusXM®²¹ with 3-month Platinum Plan trial subscription²²
- ✓ Connected Services-capable.⁵ See toyota.com for details. (Dependent on 4G network.)

Safety Features

- ✓ Toyota Safety Sense 2.5+ (TSS 2.5+)²⁴
- ✓ Full-Speed Range Dynamic Radar Cruise Control (DRCC)²⁶
- ✓ Blind Spot Monitor (BSM)³⁶ with Rear Cross-Traffic Alert (RCTA)³⁷
- ✓ Star Safety System™
- ✓ Ten airbags³²
- ✓ Tire Pressure Monitor System (TPMS)³³ with direct pressure readout

Packages/Options

- ✓ Navigation Upgrade Package¹⁴ includes:
 - Premium Audio with Dynamic Navigation¹⁴
 - Nine JBL®²³ speakers including subwoofer and amplifier
- ✓ Driver Assist Package includes:
 - 10-in. color Head-Up Display (HUD)
 - Panoramic View Monitor³⁸
 - Front and Rear Parking Assist with Automatic Braking (PA w/AB)³⁹
 - Ventilated front seats
- ✓ Cold Weather Package includes:
 - Heated steering wheel
- ✓ Power tilt/slide moonroof
- ✓ Two-tone exterior color (color-keyed body with black roof)¹

CAMRY COLORS & TRIMS



Midnight Black Metallic



Reservoir Blue



Cavalry Blue



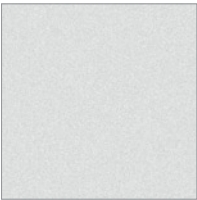
Supersonic Red¹



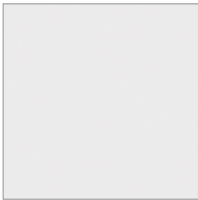
Predawn Gray Mica



Celestial Silver Metallic



Wind Chill Pearl¹



Ice Edge



Ice Cap

Available Midnight Black Metallic roof and rear spoiler¹



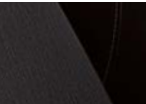
Supersonic Red, Celestial Silver Metallic,¹ Wind Chill Pearl¹

Available Midnight Black Metallic roof¹ for TRD models

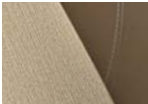


Wind Chill Pearl,¹ Underground¹

LE and LE Hybrid fabric shown in Ash

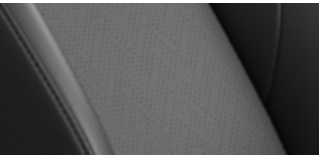


Black

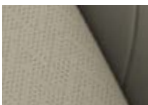


Macadamia

XLE, XLE V6 and XLE Hybrid leather trim shown in Ash



Black



Macadamia

SE, SE Nightshade Edition and SE Hybrid SofTex^{®41} trim shown in Black

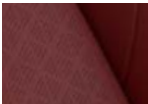


Ash

XSE, XSE V6 and XSE Hybrid leather trim shown in Black



Ash



Cockpit Red

TRD SofTex^{®41} trim shown in Black



See numbered footnotes in Disclosures section.

CAMRY WHEELS



LE Hybrid 16-in. steel wheel
with wheel cover



LE 17-in. alloy wheel



XLE, XLE V6 and XLE Hybrid 18-in.
dark gray machined-finish alloy wheel



SE and SE Hybrid 18-in. black
machined-finish alloy wheel



SE Nightshade Edition 19-in. TRD
matte bronze-finished alloy wheel



XSE, XSE V6 and XSE Hybrid 19-in.
gloss-black alloy wheel



19-in. TRD matte-black alloy wheel

CAMRY ACCESSORIES

This is a great way to add extra personality to your Camry. Not every accessory is available in your area, so for a complete list of accessories, go to toyota.com/camry/accessories.



All-weather floor liners⁴³



Blackout emblem overlays



Cargo tray⁴⁴



Illuminated doorsills



Rear bumper appliqué



19-in. TRD matte-black alloy wheels



TRD carpet floor mats⁴³



TRD carpet trunk mat



TRD shift knob

WARRANTIES

Every Toyota Car, Truck and SUV is built to exceptional standards. And that's not idle boasting. We back it up with these Limited Warranty Coverages:

Basic: 36 months/36,000 miles (all components other than normal wear and maintenance items).

Hybrid-Related Component Coverage: Hybrid-related components, including the battery control module, hybrid control module and inverter with converter, are covered for 8 years/100,000 miles. Refer to applicable *Warranty and Maintenance Guide* for details.

Hybrid Battery: HV battery is covered for 10 years or 150,000 miles, whichever comes first. Warranty coverage is subject to terms and conditions. Refer to applicable *Warranty and Maintenance Guide* for details.

Powertrain: 60 months/60,000 miles (engine, transmission/transaxle, drive system, seatbelts and airbags).

Rust-Through: 60 months/unlimited miles (corrosion perforation of sheet metal).

Emissions: Coverages vary under Federal and California regulations. Refer to applicable *Warranty and Maintenance Guide* for details.

Accessories: For Genuine Toyota Accessories purchased at the time of the new vehicle purchase, the Toyota Accessory Warranty coverage is in effect for 36 months/36,000 miles from the vehicle's in-service date, which is the same coverage as the Toyota New Vehicle Limited Warranty.

For Genuine Toyota Accessories purchased after the new vehicle purchase the coverage is 12 months, regardless of mileage, from the date the accessory was installed on the vehicle, or the remainder of any applicable new vehicle warranty, whichever provides greater coverage.

You may be eligible for transportation assistance if it's necessary that your vehicle be kept overnight for repairs covered under warranty. Please see your authorized Toyota dealership for further details.

For complete details about Toyota's warranties, please visit www.toyota.com, refer to the applicable *Warranty and Maintenance Guide* or see your Toyota dealer.

CAMRY FEATURES⁴⁵

S = Standard O = Optional P = Available as part of a package

Exterior	LE	XLE	XLE V6	SE	SE Nightshade Edition	XSE	XSE V6	TRD	LE Hybrid	SE Hybrid	SE Hybrid Nightshade Edition	XLE Hybrid	XSE Hybrid
LED headlights with LED accent lights and auto on/off feature		S	S									S	
LED headlights with LED accents lights, black trim and auto on/off feature						S	S						S
Bi-LED combination headlights with auto on/off feature	S								S				
Bi-LED combination headlights with black trim and auto on/off feature				S	S			S		S	S		
LED Daytime Running Lights (DRL) with on/off feature	S	S	S	S	S	S	S	S	S	S	S	S	S
LED combination taillights with black trim	S			S	S			S	S	S	S		
LED taillights with black trim		S	S			S	S					S	S
LED headlights with LED accent lights, auto level control and auto on/off feature												O	
Dark gray front grille	S								S				
Black front grille with sport mesh lower insert				S	S					S	S		
Dark gray front grille with chrome accents		S	S									S	
Gloss-black front grille with sport mesh lower insert						S	S	S					S
Color-keyed sport side rocker panels				S	S	S	S	S		S	S		S
Two-tone exterior color (color-keyed body with black roof)						O	O	O					O
Color-keyed power outside mirrors	S								S				
Color-keyed heated power outside mirrors with turn signal indicators				S						S			
Black heated power outside mirrors with turn signal indicators					S						S		
Color-keyed heated power outside mirrors with turn signal and blind spot warning indicators ³⁶	P	S	S	P		S	S		P	P	P	S	S
Black heated power outside mirrors with turn signal and blind spot warning indicators ³⁶					P	P	P	S			P		P
Black window trim					S	P	P	S			S		P
Color-keyed outside door handles	S			S	S								
Color-keyed outside door handles with touch-sensor lock/unlock feature	P	S	S	P	P	S	S	S	S	S	S	S	S
Power tilt/slide moonroof	O			O					O	O		O	O
Panoramic glass roof with front power tilt/slide moonroof		O	S			O	S						
19-in. x 8.5-in. TRD matte-black alloy wheels								S					
19-in. gloss-black alloy wheels						S	S						S
19-in. TRD matte bronze-finished alloy wheels					S						S		
18-in. dark gray machined-finish alloy wheels		S	S									S	
18-in. black machined-finish alloy wheels				S						S			
17-in. alloy wheels	S												
16-in. steel wheels with wheel covers									S				
Matte-black center cap with red TRD logo								S					
Washer-linked intermittent windshield wipers	S	S	S	S	S	S	S	S	S	S	S	S	S
High Solar Energy-Absorbing (HSEA) glass	S	S	S	S	S	S	S	S	S	S	S	S	S
Acoustic noise-reducing front windshield	S	S	S	S	S	S	S	S	S	S	S	S	S
Color-keyed rear spoiler				S		S	S			S			S
Black rear spoiler					S	P	P				S		P
TRD gloss-black pedestal rear spoiler								S					
TRD gloss-black front splitter, side aero skirts, and rear diffuser with red pinstriping								S					
TRD cat-back dual exhaust with polished stainless steel tips								S					
Dual exhaust with quad chrome tips						S	S						
Dual exhaust with chrome tips			S										
Single exhaust	S								S				
Single exhaust with chrome tip		S										S	
Single exhaust with dual chrome tips				S	S					S	S		S
In-glass AM/FM antenna	S	S	S	S	S	S	S	S	S	S		S	S
Roof-mounted shark-fin antenna	S	S		S		S			S	S		S	S
Black roof-mounted shark-fin antenna			S			P	S	S					P
Black SE grade badge					S						S		
Black rear "Toyota" emblem and "CAMRY" lettering					S			S			S		
Red TRD badge								S					
Black AWD badge					O								
Chrome AWD badge	O	O		O		O							

See numbered footnotes in Disclosures section.

CAMRY FEATURES⁴⁵

S = Standard O = Optional P = Available as part of a package

Interior	LE	XLE	XLE V6	SE	SE Nightshade Edition	XSE	XSE V6	TRD	LE Hybrid	SE Hybrid	SE Hybrid Nightshade Edition	XLE Hybrid	XSE Hybrid
Single-zone automatic climate control with air filter								S					
Dual zone automatic climate control with air filter	S			S	S								
Dual zone automatic climate control with air filter and rear-seat vents	P	S	S	P		S	S						
Dual zone automatic climate control with air filter, electric compressor and humidity sensor									S	S	S		
Dual zone automatic climate control with air filter, electric compressor, humidity sensor and rear-seat vents												S	S
Qi-compatible wireless smartphone charging ³⁶ with charge indicator light	P	S	S	P		S	S		P	P		S	S
4.2-in. TFT Multi-Information Display (MID) with odometer, outside temperature, fuel economy and trip information, current/average fuel economy, distance to empty, average speed, trip distance with timer and warning messages	S												
4.2-in. TFT Multi-Information Display (MID) with odometer, outside temperature, fuel economy and trip information, current/average fuel economy, distance to empty, average speed, trip distance with timer, TPMS ³³ and warning messages				S	S								
4.2-in. TFT Multi-Information Display (MID) with TRD start-up animation, odometer, outside temperature, fuel economy and trip information, current/average fuel economy, distance to empty, average speed, trip distance with timer, TPMS ³³ and warning messages								S					
TRD instrumentation with red-illuminated accents								S					
4.2-in. TFT Multi-Information Display (MID) with odometer, outside temperature, fuel economy and trip information, current/average fuel economy, distance to empty, average speed, trip distance with timer, hybrid system information, energy monitor and warning messages									S				
4.2-in. TFT Multi-Information Display (MID) with odometer, outside temperature, fuel economy and trip information, current/average fuel economy, distance to empty, average speed, trip distance with timer, hybrid system information, energy monitor, TPMS ³³ and warning messages										S	S		
7-in. TFT Multi-Information Display (MID) with customizable settings, odometer, outside temperature, fuel economy and trip information, current/average fuel economy, distance to empty, average speed, trip distance with timer, TPMS ³³ scheduled maintenance and warning messages	O	S	S	O	O	S	S						
7-in. TFT Multi-Information Display (MID) with customizable settings, odometer, outside temperature, fuel economy and trip information, current/average fuel economy, distance to empty, average speed, trip distance with timer, TPMS ³³ scheduled maintenance, compass and warning messages		O	O			O	O						
7-in. TFT Multi-Information Display (MID) with customizable settings, odometer, outside temperature, fuel economy and trip information, current/average fuel economy, distance to empty, average speed, hybrid system information, energy monitor, TPMS ³³ scheduled maintenance and warning messages												S	S
7-in. TFT Multi-Information Display (MID) with customizable settings, odometer, outside temperature, fuel economy and trip information, current/average fuel economy, distance to empty, average speed, hybrid system information, energy monitor, TPMS ³³ scheduled maintenance, compass and warning messages												O	O
Fabric-trimmed front seats with passenger-side seatback pocket; 8-way power-adjustable driver's seat with power lumbar support; 6-way adjustable front passenger seat	S								S				
Sport SofTex®-trimmed ⁴¹ front seats with fabric inserts, seatback pockets; 8-way power-adjustable driver's seat with power lumbar support; 6-way adjustable front passenger seat				S	S					S	S		
Sport SofTex®-trimmed ⁴¹ front seats with red seatbelts and stitching, red-stitched TRD headrest logo, seatback pockets; 8-way power-adjustable driver's seat with power lumbar support; 6-way adjustable front passenger seat								S					
Leather-trimmed front seats with seatback pockets; 8-way power-adjustable driver's seat with power lumbar support; 8-way power-adjustable front passenger seat		S	S			S	S					S	S
Multi-stage heated front seats	P	S	S	P		S	S		P	P		S	S
Multi-stage heated and ventilated front seats		P	P			P	P					P	P
Fixed rear seat								S					
Rear adjustable headrests		S	S			S	S					S	S

See numbered footnotes in Disclosures section.

CAMRY FEATURES⁴⁵

S = Standard O = Optional P = Available as part of a package

Interior (continued)	LE	XLE	XLE V6	SE	SE Nightshade Edition	XSE	XSE V6	TRD	LE Hybrid	SE Hybrid	SE Hybrid Nightshade Edition	XLE Hybrid	XSE Hybrid
60/40 split fold-down rear seat with center armrest with cup holders	S	S	S	S	S	S	S		S	S	S	S	S
Full-Speed Range Dynamic Radar Cruise Control (DRCC) ²⁶		S	S			S	S	S	S	S	S	S	S
Dynamic Radar Cruise Control (DRCC) ²⁶	S			S	S								
Tilt/telescopic 3-spoke steering wheel with audio, Multi-Information Display (MID) and Bluetooth ^{®46} hands-free phone, voice-command, Dynamic Radar Cruise Control (DRCC) ²⁶ conventional cruise control and Lane Departure Alert (LDA) ²⁷ controls	S								S				
Leather-trimmed tilt/telescopic 3-spoke steering wheel with audio, Multi-Information Display (MID), Bluetooth ^{®46} hands-free phone, voice-command, Dynamic Radar Cruise Control (DRCC) ²⁶ and Lane Departure Alert (LDA) ²⁷ controls		S	S									S	
Leather-trimmed tilt/telescopic 3-spoke steering wheel with paddle shifters, audio, Multi-Information Display (MID), Bluetooth ^{®46} hands-free phone, voice-command, Dynamic Radar Cruise Control (DRCC) ²⁶ and Lane Departure Alert (LDA) ²⁷ controls				S	S	S	S			S	S		S
Leather-trimmed tilt/telescopic 3-spoke steering wheel with red stitching, paddle shifters, audio, Multi-Information Display (MID), Bluetooth ^{®46} hands-free phone, voice-command, Dynamic Radar Cruise Control (DRCC) ²⁶ and Lane Departure Alert (LDA) ²⁷ controls								S					
Heated steering wheel	P	P	P	P		P	P		P	P		P	P
3-mode switch (Eco, Normal, Sport)	S	S	S	S	S	S	S	S					
4-mode switch (EV, ⁴² Eco, Normal, Sport)									S	S	S	S	S
10-in. color Head-Up Display (HUD) with speedometer, shift position, TSS 2.5+ ²⁴ indicators, audio, phone, outside temperature and adjustable brightness			S				S						
10-in. color Head-Up Display (HUD) with speedometer, navigation, shift position, compass, TSS 2.5+ ²⁴ indicators, audio, phone, outside temperature and adjustable brightness		P	P			P	P						
10-in. color Head-Up Display (HUD) with speedometer, navigation, shift position, compass, TSS 2.5+ ²⁴ indicators, audio, phone, outside temperature, Hybrid System Indicator and adjustable brightness												P	P
Panoramic View Monitor, ³⁸ overhead 360-degree view in drive and reverse, and curb view		P	P			P	P					P	P
Soft-material upper door trim	S	S	S	S	S	S	S	S	S	S	S	S	S
Linear dark interior trim	S			S	S				S	S	S		
Wood inlay interior trim		S	S									S	
Patterned metal interior trim						S	S	S					S
Red-stitched instrument panel and shift boot								S					
Aluminum sport pedals								S					
Black leather shift knob with red stitching and debossed TRD logo								S					
Black floor mats ⁴³ with red "CAMRY TRD" logo and red outline								S					
Interior silver door handles	S	S	S	S	S	S	S	S	S	S	S	S	S
Multi-function in-key remote keyless entry system with lock, two-stage unlock, panic, trunk-release functions and remote illuminated entry	S			S	S								
Smart Key System on front doors and trunk with Push Button Start, remote keyless entry system and remote illuminated entry	P	S	S	P	P	S	S	S	S	S	S	S	S
Power windows with 4-window auto up/down, jam protection and retained-power features	S	S	S	S	S	S	S	S	S	S	S	S	S
Rear window defogger with timer	S	S	S	S	S	S	S	S	S	S	S	S	S
Power door locks with shift-linked automatic locking feature with anti-lockout feature	S	S	S	S	S	S	S	S	S	S	S	S	S
Day/night rearview mirror	S			S	S			S	S	S	S		
Auto-dimming rearview mirror	P	S	S	P	P	S	S		P	P	P	S	S

CAMRY FEATURES⁴⁵

S = Standard O = Optional P = Available as part of a package

Interior (continued)	LE	XLE	XLE V6	SE	SE Nightshade Edition	XSE	XSE V6	TRD	LE Hybrid	SE Hybrid	SE Hybrid Nightshade Edition	XLE Hybrid	XSE Hybrid
Overhead console with maplights and sunglasses storage	S			S	S			S	S	S	S		
Overhead console with maplights, sunglasses storage and HomeLink ^{®34} universal transceiver	P	S		P	P	S			P	P	P	S	S
Overhead console with maplights and HomeLink ^{®34} universal transceiver	P	P	S	P		P	S		P	P		P	P
Covered center console, armrest and storage	S	S	S	S	S	S	S	S	S	S	S	S	S
LED-illuminated glove compartment	S	S	S	S	S	S	S	S	S	S	S	S	S
One 12V auxiliary power outlet ⁴⁷	S	S	S	S	S	S	S	S	S	S	S	S	S
One USB and media port ³¹ (1.5A)	S	S	S	S	S	S	S	S	S	S	S	S	S
One USB-C charge port ³¹	S	S	S	S	S	S	S	S	S	S	S	S	S
Dual sun visors with sliding extensions		S				S		S				S	S
Dual sun visors with sliding extensions and illuminated vanity mirrors	S	P	S	S	S	P	S		S	S	S	P	P
LED rear-seat reading lights	P	S	S	P		S	S		P	P		P	P
Ambient lighting		S	S			S	S					S	S
Two front cup holders; two front door and two rear bottle holders								S					
Two front and two rear cup holders; two front door and two rear bottle holders	S	S	S	S	S	S	S		S	S	S	S	S
Electric Parking Brake (EPB) ⁴⁸ with Brake Hold ⁴⁹ function	O	S	S	O	O	S	S	S	S	S	S	S	S

Audio Multimedia

Audio — 7-in. touchscreen, six speakers, Android Auto ^{™4} & Apple CarPlay ^{®3} & Amazon Alexa ¹⁸ compatible, SiriusXM ^{®21} with 3-month Platinum Plan trial subscription ²² See toyota.com/audio-multimedia for details. (Dependent on 4G network.)	S			S	S			S	S	S	S		
Audio Plus — 9.0-in. touchscreen, six speakers, Android Auto ^{™4} & Apple CarPlay ^{®3} & Amazon Alexa ¹⁸ compatible, SiriusXM ^{®21} with 3-month Platinum Plan trial subscription ²² See toyota.com/audio-multimedia for details. (Dependent on 4G network.)	O	S		O		S			O	O		S	S
Audio Plus with JBL ^{®23} — 9.0-in. touchscreen, nine JBL ^{®23} speakers including subwoofer and amplifier, Android Auto ^{™4} & Apple CarPlay ^{®3} & Amazon Alexa ¹⁸ compatible, SiriusXM ^{®21} with 3-month Platinum Plan trial subscription ²² See toyota.com/audio-multimedia for details. (Dependent on 4G network.)			S				S	O					
Premium Audio — 9.0-in. touchscreen with Dynamic Navigation; ¹⁴ nine JBL ^{®23} speakers including subwoofer and amplifier, Android Auto ^{™4} & Apple CarPlay ^{®3} & Amazon Alexa ¹⁸ compatible, SiriusXM ^{®21} with 3-month Platinum Plan trial subscription ²² See toyota.com/audio-multimedia for details. (Dependent on 4G network.)		O	O			O	O					O	O
Toyota+Alexa app	S	S	S	S	S	S	S	S	S	S	S	S	S

See numbered footnotes in Disclosures section.

Safety and Convenience

	LE	XLE	XLE V6	SE	SE Nightshade Edition	XSE	XSE V6	TRD	LE Hybrid	SE Hybrid	SE Hybrid Nightshade Edition	XLE Hybrid	XSE Hybrid
<div><div><div>STAR</div><div>SAFETY SYSTEM</div></div><div>Star Safety System™ — includes Enhanced Vehicle Stability Control (VSC),⁵⁰ Traction Control (TRAC), 4-wheel Anti-lock Brake System (ABS), Electronic Brake-force Distribution (EBD), Brake Assist (BA)⁵¹ and Smart Stop Technology® (SST)⁵²</div></div>	S	S	S	S	S	S	S	S	S	S	S	S	S
Ten airbags ³² — includes driver and front passenger Advanced Airbag System, driver and front passenger seat-mounted side airbags, driver and front passenger knee airbags, rear seat-mounted side airbags, and front and rear side curtain airbags	S	S	S	S	S	S	S	S	S	S	S	S	S
Driver and front passenger Whiplash-Injury-Lessening (WIL) ⁵³ seats	S	S	S	S	S	S	S	S	S	S	S	S	S
3-point seatbelts for all seating positions; driver-side Emergency Locking Retractor (ELR) and Automatic/Emergency Locking Retractor (ALR/ELR) on all passenger seatbelts	S	S	S	S	S	S	S	S	S	S	S	S	S
LATCH (Lower Anchors and Tethers for Children) includes lower anchors on outboard rear seats	S	S	S	S	S	S	S	S	S	S	S	S	S
Child-protector rear door locks and power window lockout control	S	S	S	S	S	S	S	S	S	S	S	S	S
Energy-absorbing collapsible steering column	S	S	S	S	S	S	S	S	S	S	S	S	S
Front and rear energy-absorbing crumple zones	S	S	S	S	S	S	S	S	S	S	S	S	S
Side-impact door beams	S	S	S	S	S	S	S	S	S	S	S	S	S
Tire Pressure Monitor System (TPMS) ³³	S								S				
Tire Pressure Monitor System (TPMS) ³³ with direct pressure readout		S	S	S	S	S	S	S		S	S	S	S
Collision sensors: deactivate high-voltage battery									S	S	S	S	S
Toyota Safety Sense™ 2.5+ (TSS 2.5+) ²⁴ — Pre-Collision System with Pedestrian Detection (PCS w/PD), ²⁵ Lane Departure Alert with Steering Assist (LDA w/SA), ²⁷ Automatic High Beams (AHB), ²⁸ Lane Tracing Assist (LTA), ²⁹ Road Sign Assist (RSA) ³⁰ and Dynamic Radar Cruise Control (DRCC) ²⁶	S			S	S								
Toyota Safety Sense™ 2.5+ (TSS 2.5+) ²⁴ — Pre-Collision System with Pedestrian Detection (PCS w/PD), ²⁵ Lane Departure Alert with Steering Assist (LDA w/SA), ²⁷ Automatic High Beams (AHB), ²⁸ Lane Tracing Assist (LTA), ²⁹ Road Sign Assist (RSA) ³⁰ and Full-Speed Range Dynamic Radar Cruise Control (DRCC) ²⁶		S	S			S	S	S	S	S	S	S	S
Blind Spot Monitor (BSM) ³⁶ with Rear Cross-Traffic Alert (RCTA) ³⁷	P	S	S	P	P	S	S	S	P	P	P		S
Front and Rear Parking Assist with Automatic Braking (PA w/AB) ³⁹		P	P			P	P					P	P
Automatic engine shut off	S	S	S	S	S	S	S	S	S	S	S	S	S
Hill Start Assist Control (HAC) ⁵⁴	S	S	S	S	S	S	S	S	S	S	S	S	S
Anti-theft system with alarm	S	S	S	S	S	S	S	S	S	S	S	S	S
ToyotaCare, a no cost maintenance plan with Roadside Assistance ⁵⁵	S	S	S	S	S	S	S	S	S	S	S	S	S
Rear-Seat Reminder ⁵⁶	S	S	S	S	S	S	S	S	S	S	S	S	S
Integrated backup camera ⁵⁷ with projected path	S			S	S			S	S	S	S		
Integrated backup camera ⁵⁷ with dynamic gridlines	P	S	S	P		S	S		P	P		S	S

CAMRY FEATURES⁴⁵

S = Standard O = Optional P = Available as part of a package

Packages and Options	LE	XLE	XLE V6	SE	SE Nightshade Edition	XSE	XSE V6	TRD	LE Hybrid	SE Hybrid	SE Hybrid Nightshade Edition	XLE Hybrid	XSE Hybrid
Convenience Package — includes Smart Key System, HomeLink ^{®34} universal transceiver, auto-dimming rearview mirror	P			P	P								
Convenience Package (Hybrid) — includes HomeLink ^{®34} universal transceiver, auto-dimming rearview mirror									P	P	P		
Audio Upgrade Package													
Audio Plus with 9-in. touchscreen	P			P					P	P			
Qi-compatible wireless smartphone charging ³⁵	P			P					P	P			
Rear-seat vents	P			P									
Navigation Upgrade Package ¹⁴ — includes Premium Audio with Dynamic Navigation, ¹⁴ 9-in. touchscreen and nine JBL ^{®23} speakers		O	O			O	O					O	O
TRD Premium Audio with nine JBL ^{®23} speakers								O					
Driver Assist Package													
10-in. color Head-Up Display (HUD)		P				P						P	P
Panoramic View Monitor ³⁸		P	P			P	P					P	P
Front and Rear Parking Assist with Automatic Braking (PA w/AB) ³⁹		P	P			P	P					P	P
Multi-stage ventilated front seats		P	P			P	P					P	P
Cold Weather Package													
Heated steering wheel	P	P	P	P		P	P		P	P		P	P
Heated front seats	P	S	S	P		S	S		P	P		S	S
Heated power outside mirrors	P	S	S	P		S	S		P	P		S	S
Power tilt/slide moonroof	O			O					O	O		O	O
Panoramic glass roof with front power tilt/slide moonroof		O	S			O	S						
Blind Spot Monitor (BSM) ³⁶ with Rear Cross-Traffic Alert (RCTA) ³⁷	O			O	O				O	O	O		
Two-tone exterior color (color-keyed body with black roof) ¹ — includes black window trim and sideview mirror caps						O	O	O					O
Adaptive Headlights — LED headlights with level control and auto on/off feature												O	
All-season tires								O					
Summer tires								O					

See numbered footnotes in Disclosures section.

CAMRY SPECIFICATIONS

S = Standard O = Optional

	LE	XLE	XLE V6	SE	SE Nightshade Edition	XSE	XSE V6	TRD	LE Hybrid	SE Hybrid	SE Hybrid Nightshade Edition	XLE Hybrid	XSE Hybrid
--	----	-----	--------	----	-----------------------------	-----	--------	-----	--------------	--------------	------------------------------------	---------------	---------------

Mechanical/Performance

ENGINE

2.5-Liter Dynamic Force 4-Cylinder DOHC D-4S Injection Dual Variable Valve Timing with intelligence (VVT-i) and Eco, Normal and Sport drive modes; 203 hp @ 6800 rpm; 184 lb.-ft. @ 5000 rpm	S	S		S	S								
--	---	---	--	---	---	--	--	--	--	--	--	--	--

2.5-Liter Dynamic Force 4-Cylinder DOHC D-4S Injection Dual Variable Valve Timing with intelligence (VVT-i) and Eco, Normal and Sport drive modes; 206 hp @ 6800 rpm; 186 lb.-ft. @ 5000 rpm						S							
--	--	--	--	--	--	---	--	--	--	--	--	--	--

3.5-Liter V6 DOHC D-4S Injection Dual Variable Valve Timing with intelligence (VVT-i) and Eco, Normal and Sport drive modes 301 hp @ 6600 rpm; 267 lb.-ft. @ 4700 rpm			S				S	S					
---	--	--	---	--	--	--	---	---	--	--	--	--	--

208 net system hp									S	S	S	S	S
-------------------	--	--	--	--	--	--	--	--	---	---	---	---	---

Hybrid engine: 2.5-Liter Dynamic Force 4-Cylinder DOHC D-4S Injection Dual Variable Valve Timing with intelligence (VVT-i) with Eco, Normal, Sport and EV ⁴² drive modes; 176 hp @ 5700 rpm; 163 lb.-ft. @ 5200 rpm									S	S	S	S	S
--	--	--	--	--	--	--	--	--	---	---	---	---	---

2.5-Liter Dynamic Force 4-Cylinder DOHC D-4S Injection Dual Variable Valve Timing with intelligence (VVT-i) and Eco, Normal and Sport drive modes; 202 hp @ 6600 rpm; 182 lb.-ft. @ 4400 rpm	O	O		O	O								
--	---	---	--	---	---	--	--	--	--	--	--	--	--

2.5-Liter Dynamic Force 4-Cylinder DOHC D-4S Injection Dual Variable Valve Timing with intelligence (VVT-i) and Eco, Normal and Sport drive modes; 205 hp @ 6600 rpm; 185 lb.-ft. @ 4600 rpm						O							
--	--	--	--	--	--	---	--	--	--	--	--	--	--

COMPRESSION RATIO	13.0 : 1	13.0 : 1	11.8 : 1	13.0 : 1	13.0 : 1	13.0 : 1	11.8 : 1	11.8 : 1	14.0 : 1	14.0 : 1	14.0 : 1	14.0 : 1	14.0 : 1
-------------------	----------	----------	----------	----------	----------	----------	----------	----------	----------	----------	----------	----------	----------

EMISSION RATING

Super Ultra Low Emission Vehicle (SULEV)	S	S		S	S	S			S	S	S	S	S
--	---	---	--	---	---	---	--	--	---	---	---	---	---

Ultra Low Emission Vehicle (ULEV)	S (AWD)	S (AWD)	S	S (AWD)	S (AWD)	S (AWD)	S	S					
-----------------------------------	---------	---------	---	---------	---------	---------	---	---	--	--	--	--	--

ELECTRIC MOTOR

Power output									118 HP (88 kW)	118 HP (88 kW)	118 HP (88 kW)	118 HP (88 kW)	118 HP (88 kW)
--------------	--	--	--	--	--	--	--	--	-------------------	-------------------	-------------------	-------------------	-------------------

Torque									149 lb.-ft. (202 N-m)	149 lb.-ft. (202 N-m)	149 lb.-ft. (202 N-m)	149 lb.-ft. (202 N-m)	149 lb.-ft. (202 N-m)
--------	--	--	--	--	--	--	--	--	--------------------------	--------------------------	--------------------------	--------------------------	--------------------------

Voltage									650V (max sys.)	650V (max sys.)	650V (max sys.)	650V (max sys.)	650V (max sys.)
---------	--	--	--	--	--	--	--	--	--------------------	--------------------	--------------------	--------------------	--------------------

Hybrid system net power									208 HP	208 HP	208 HP	208 HP	208 HP
-------------------------	--	--	--	--	--	--	--	--	--------	--------	--------	--------	--------

TRACTION BATTERY

Sealed Lithium-ion (LI)									S	S	S	S	S
-------------------------	--	--	--	--	--	--	--	--	---	---	---	---	---

VOLTAGE

Voltage									259.0V	259.0V	259.0V	259.0V	259.0V
---------	--	--	--	--	--	--	--	--	--------	--------	--------	--------	--------

CAMRY SPECIFICATIONS

S = Standard O = Optional

	LE	XLE	XLE V6	SE	SE Nightshade Edition	XSE	XSE V6	TRD	LE Hybrid	SE Hybrid	SE Hybrid Nightshade Edition	XLE Hybrid	XSE Hybrid
TRANSMISSION													
Direct Shift-8AT 8-speed Electronically Controlled automatic Transmission with intelligence (ECT-i) with sequential shift mode	S	S	S	S	S	S	S	S					
Electronically controlled Continuously Variable Transmission (ECVT) with sequential shift mode									S	S	S	S	S
DRIVETRAIN													
Front-Wheel Drive (FWD)	S	S	S	S	S	S	S	S	S	S	S	S	S
All-Wheel Drive (AWD)	O	O		O	O	O							
BODY CONSTRUCTION													
Unitized body with front and rear anti-vibration sub-frames	S	S	S	S	S	S	S	S	S	S	S	S	S
Increased-thickness underbody braces and added rear-seat V-bracing								S					
SUSPENSION													
Independent MacPherson strut front suspension with gas-filled shock absorbers and stabilizer bar; multi-link rear suspension with gas-filled shock absorbers and stabilizer bar, and front strut tower bracing	S	S	S						S			S	
Independent MacPherson strut front suspension with gas-filled shock absorbers and stabilizer bar; multi-link rear suspension with gas-filled shock absorbers and stabilizer bar, sport-tuned shock absorbers and springs, and front strut tower bracing				S	S	S	S			S	S		S
Independent MacPherson strut front suspension; multi-link rear suspension; front strut tower bracing; TRD track-tuned front and rear coil springs, shock absorbers and stabilizer bars								S					
STEERING													
Electric Power Steering (EPS); power-assisted rack-and-pinion	S	S	S	S	S	S	S	S	S	S	S	S	S
Turning circle diameter, curb to curb (ft.)	37.4	38.0	38.0	38.0	38.0	38.0	38.0	38.0	37.4	38.0	38.0	38.0	38.0
Turning circle diameter, curb to curb (ft.) (AWD-equipped)	38.7	39.3		39.3	39.3	39.3							
BRAKES													
Power-assisted ventilated 12-in. front disc brakes; solid 11.06-in. rear disc brakes with hydraulic brake booster, Electronically Controlled Braking (ECB) system and Star Safety System™	S	S	S	S	S	S	S						
Power-assisted ventilated 12-in. front disc brakes; solid 11.06-in. rear disc brakes with hydraulic brake booster, Electronically Controlled Braking (ECB) system, integrated regenerative braking and Star Safety System™									S	S	S	S	S
Power-assisted ventilated 12.9-in. front disc brakes with dual-piston calipers; solid 11.06-in. rear disc brakes with hydraulic brake booster; Red-painted front and rear calipers; Unique brake booster and pedal stiffness tuning; Electronically Controlled Braking (ECB) system and Star Safety System™								S					
Active Cornering Assist (ACA)								S					

CAMRY SPECIFICATIONS

S = Standard O = Optional

Dimensions

EXTERIOR DIMENSIONS (in.)

	LE	XLE	XLE V6	SE	SE Nightshade Edition	XSE	XSE V6	TRD	LE Hybrid	SE Hybrid	SE Hybrid Nightshade Edition	XLE Hybrid	XSE Hybrid
Overall height/AWD-equipped	56.9/57.1	56.9/57.1	56.9	56.9/57.1	56.9/57.1	56.9/57.1	56.9	56.3	56.9	56.9	56.9	56.9	56.9
Overall width	72.4	72.4	72.4	72.4	72.4	72.4	72.4	73.1	72.4	72.4	72.4	72.4	72.4
Overall length	192.1	192.1	192.1	192.7	192.7	192.7	192.7	194.6	192.1	192.7	192.7	192.1	192.7
Wheelbase	111.2	111.2	111.2	111.2	111.2	111.2	111.2	111.2	111.2	111.2	111.2	111.2	111.2
Ground clearance	5.7	5.7	5.7	5.7	5.7	5.7	5.7	5.7	5.7	5.7	5.7	5.7	5.7
Track (front/rear)	62.6/62.8	62.2/62.6	62.2/62.6	62.2/62.6	62.2/62.6	62.2/62.6	62.6/62.6	62.2/63.0	63.0/63.2	62.2/62.6	62.2/62.6	62.2/62.6	62.2/62.6
Track (front/rear) (AWD-equipped)	62.6/63.0	62.2/62.8		62.2/63.2	62.2/63.2	62.2/62.8							

INTERIOR DIMENSIONS (in.)

Head room front/rear without moonroof (with moonroof)	38.3/38.0 (37.5/38.0)	38.3/38.0 (37.5/38.0)		38.3/38.0 (37.5/38.0)	38.3/38.0	38.3/38.0 (37.5/38.0)		38.3/38.0	38.3/37.6 (37.5/37.6)	38.3/37.6 (37.5/37.6)	38.3/37.6 (37.5/37.6)	38.3/37.6 (37.5/37.6)	38.3/37.6 (37.5/37.6)
Head room front/rear without moonroof (with moonroof) (AWD-equipped)	38.3/37.6 (37.5/37.6)	38.3/37.6 (37.5/37.6)		38.3/37.6 (37.5/37.6)	38.3/37.6 (37.5/37.6)	38.3/37.6 (37.5/37.6)							
Shoulder room	57.7/55.7	57.7/55.7	57.7/55.7	57.7/55.7	57.7/55.7	57.7/55.7	57.7/55.7	57.7/55.7	57.7/55.7	57.7/55.7	57.7/55.7	57.7/55.7	57.7/55.7
Hip room	55.4/54.7	55.4/54.7	55.4/54.7	55.4/54.7	55.4/54.7	55.4/54.7	55.4/54.7	55.4/54.7	55.4/54.6	55.4/54.6	55.4/54.6	55.4/54.6	55.4/54.6
Leg room	42.1/38.0	42.1/38.0	42.1/38.0	42.1/38.0	42.1/38.0	42.1/38.0	42.1/38.0	42.1/38.0	42.1/38.0	42.1/38.0	42.1/38.0	42.1/38.0	42.1/38.0

Weights and Capacities

Curb weight (lb.)/ AWD-equipped	3310/3475	3380/3540	3595	3340/3530	3350/3530	3425/3580	3585	3575	3480	3535	3545	3565	3580
EPA passenger volume (cu. ft.) without moonroof/AWD-equipped	100.4/99.9	100.4/99.9		100.4/99.9	100.4/99.9	100.4/99.9		100.4	99.9	99.9	99.9	99.9	99.9
EPA passenger volume (cu. ft.) with moonroof/AWD-equipped	99.3/98.8	99.3/98.8	99.3	99.3/98.8	99.3/98.8	99.3/98.8	99.3		98.8	98.8	98.8	98.8	98.8
Cargo volume, ⁴⁴ rear seatbacks up (cu. ft.)	15.1	15.1	15.1	15.1	15.1	15.1	15.1	15.1	15.1	15.1	15.1	15.1	15.1
Fuel tank (gal.)/AWD-equipped	15.8/14.4	15.8/14.4	15.8	15.8/14.4	15.8/14.4	15.8/14.4	15.8	15.8	13.2	13.2	13.2	13.2	13.2
Seating capacity	5	5	5	5	5	5	5	5	5	5	5	5	5

TIRES

All-season	S	S	S	S	S	S	S	S	S	S	S	S	S
Summer								O					
Spare: Temporary	S	S	S	S	S	S	S	S	S	S	S	S	S

Mileage Estimates (mpg city/highway/combined)²

Front-Wheel Drive (FWD)	28/39/32	27/38/31	22/33/26	28/39/32	28/39/32	27/38/31	22/32/26	22/31/25	51/53/52	44/47/46	44/47/46	44/47/46	44/47/46
All-Wheel Drive (AWD)	25/34/29	25/34/28		25/34/29	25/34/29	25/34/28							

DISCLOSURES

1. Extra-cost color. 2. EPA-estimated 28 city/39 hwy/32 combined mpg rating for 2023 Camry LE, SE and SE Nightshade Edition; 27 city/38 hwy/31 combined mpg rating for 2023 Camry XLE 4-Cylinder and XSE 4-Cylinder; 22 city/33 hwy/26 combined mpg rating for 2023 Camry XLE V6; 22 city/32 hwy/26 combined mpg rating for 2023 Camry XSE V6; 21 city/31 hwy/25 combined mpg rating for 2023 Camry TRD; 51 city/53 hwy/52 combined mpg rating for 2023 Camry LE Hybrid; and 44 city/47 hwy/46 combined mpg rating for 2023 Camry SE Hybrid, XLE Hybrid and XSE Hybrid. Use for comparison purposes only. Your mileage will vary for many reasons, including your vehicle's condition and how/where you drive. See www.fueleconomy.gov. 3. Apps and services are subject to change at any time without notice. Data charges may apply. Apple CarPlay® functionality requires a compatible iPhone® connected with an approved data cable into the USB media port. Apple CarPlay® is a registered trademark of Apple Inc. 4. Vehicle user interface is a product of Google and its terms and privacy statement apply. To use Android Auto on your audio display, you'll need an Android Auto compatible vehicle and Android phone. For phone compatibility visit: <https://www.android.com/aut/>. Requires compatible smartphone connected with an approved data cable into the USB media port, and data plan rates apply. Apps and services vary by phone carrier and are subject to change at any time without notice. Android and Android Auto are trademarks of Google. 5. Connected Services depend on factors outside Toyota's control, including an operative telematics device, a cellular connection, GPS signal and the availability of a compatible wireless network, without which system functionality and availability may be limited or precluded, including access to response center and emergency support. Service may vary by vehicle and region. Apps and services subject to change at any time without notice. Requires app download/registration and subscription after trial (if applicable). Terms of Use apply. Data usage and charges may apply. See usage precautions and service limitations in *Owner's Manual* and <https://www.toyota.com/connected-services/> for additional limitations and details. To learn about Toyota's Connected Services data collection, use, sharing and retention practices, please visit <https://www.toyota.com/privacyvts/>. All trials begin on the original date of purchase or lease of a new vehicle, with the exception of Wi-Fi for which the trial begins at the time of activation. Paid subscription required after trial in order to continue accessing the respective services. Terms of Use apply. 6. Toyota app requires an active Remote Connect trial or subscription. 7. Apple and the Apple logo are trademarks of Apple Inc., registered in the U.S. and other countries. 8. Android is a trademark of Google LLC. 9. Safety Connect® depends on factors outside of Toyota's control, including an operative telematics device, a cellular connection, GPS signal, and the availability of a compatible wireless network, without which system functionality and availability may be limited or precluded, including access to response center and emergency support. Stolen vehicle police report required to use Stolen Vehicle Locator. Automatic Collision Notification activates only in limited circumstances. Requires app download/registration and subscription after trial (if applicable). Service subject to change at any time without notice. Terms of Use apply. Service may vary by vehicle and region. See usage precautions and service limitations in *Owner's Manual* and at [toyota.com/connected-services](https://www.toyota.com/connected-services/) for additional details. To learn about Toyota's Connected Services data collection, use, sharing and retention practices, please visit <https://www.toyota.com/privacyvts/>. The Safety Connect® trial period is at no extra cost and begins on the original date of purchase or lease of a new vehicle. After the trial period expires, enrollment in paid subscription is required to access the service. 10. Requires adequate cellular coverage and GPS signal strength. May not work in all areas. Service may vary by vehicle and region. See Toyota Dealer for details and exclusions. 11. Building and/or parking structures may limit system effectiveness. Stolen vehicle police report required to use Stolen Vehicle Locator. For additional assistance contact the Toyota Customer Experience Center at 1-800-331-4331. 12. Information provided is based on the last time data was collected from the vehicle and is not real-time data. Service Connect depends on factors outside of Toyota's control, including an operative telematics device, a cellular connection, GPS signal, and the availability of a compatible wireless network, without which system functionality and availability may be limited or precluded. Service may vary by vehicle and region. Requires app download/registration and subscription after trial. Service subject to change at any time without notice. Terms of Use apply. Data charges may apply. See usage precautions and service limitations in *Owner's Manual* and at [toyota.com/connected-services](https://www.toyota.com/connected-services/) for additional details. To learn about Toyota's Connected Services data collection, use, sharing and retention practices, please visit <https://www.toyota.com/privacyvts/>. Service Connect is not renewable as a stand-alone service and requires a subscription to any of Safety Connect®, Remote Connect or Drive Connect upon trial expiration. The Service Connect trial period is at no extra cost and begins on the original date of purchase or lease of a new vehicle. Subscription required after trial. Service Connect renewal will be included when Safety Connect®, Remote Connect or Destination Assist connected service renewal is selected. Service Connect is not renewable as a stand-alone service. 13. Eligible vehicle and wireless service required. Wi-Fi Connect depends on factors outside of Toyota's control, including an operative telematics device, a cellular connection, GPS signal, and the availability of a compatible wireless network, without which system functionality and availability may be limited or precluded. Wi-Fi Connect coverage and service not available everywhere. Valid in the contiguous U.S. and Alaska. Do not drive distracted. Go to att.com/toyota for terms and conditions. Data usage and charges apply. Up to 5 devices can be supported using in-vehicle connectivity. Apps and services subject to change at any time without notice. The Wi-Fi Connect trial begins at the time of enrollment and expires the earlier of 3GB data use or the 1-month trial period ends. Subscription required after trial. Integrated Streaming requires separate subscriptions to third-party provider services. Terms of Use apply. The Wi-Fi Connect trial begins at the time of enrollment and expires when 30 days or the earlier of 3GB of data is used or the 1-month period ends. Subscription required after trial. Integrated Streaming requires separate subscriptions to third-party provider services. Terms of Use apply. 14. Dynamic Navigation depends on factors outside of Toyota's control, including an operative telematics device, a cellular connection, GPS signal, and the availability of a compatible wireless network, without which system functionality and availability may be limited or precluded. Services not available in every city or roadway. Use common sense when relying on information provided. Service may vary by vehicle and region. Registration is required. Subscription required after trial. Terms of Use apply. Data charges may apply. See *Owner's Manual* and <https://www.toyota.com/connected-services/> for additional limitations and details. To learn about Toyota's Connected Services data collection, use, sharing and retention practices, please visit <https://www.toyota.com/privacyvts/>. 15. Destination Assist depends on factors outside of Toyota's control, including an operative telematics device, a cellular connection, GPS signal, and the availability of a compatible wireless network, without which system functionality and availability may be limited or precluded. Use common sense when relying on this information. Service may vary by vehicle and region. Registration required. Subscription required after trial. Services subject to change at any time without notice. Terms of Use apply. Data charges may apply. See *Owner's Manual* and [toyota.com/connected-services](https://www.toyota.com/connected-services/) for additional limitations and details. To learn about Toyota's Connected Services data collection, use, sharing and retention practices, please visit <https://www.toyota.com/privacyvts/>. 16. Use only if aware of circumstances surrounding vehicle and it is legal and safe to do so (e.g., do not remotely start engine if vehicle is in an enclosed space or vehicle is occupied by a child). Remote Connect depends on factors outside of Toyota's control, including an operative telematics device, a cellular connection, GPS signal, and the availability of a compatible wireless network, without which system functionality and availability may be limited or precluded. Digital Key also requires Bluetooth® connectivity. Service may vary by vehicle and region. Requires app download and registration/subscription after trial (if applicable). Terms of Use apply. Data charges may apply. Remote start/stop not available on manual transmission-equipped vehicles. Services subject to change at any time without notice. See usage precautions and service limitations in *Toyota Owner's Manual* and at <https://www.toyota.com/connected-services/> for additional details. To learn about Toyota's Connected Services data collection, use, sharing and retention practices, please visit <https://www.toyota.com/privacyvts/>. The Remote Connect trial period (if applicable) is at no extra cost and begins on the original date of purchase or lease of a new vehicle. Subscription required after trial to access the service. Terms of Use apply. 17. Not all smartwatches are compatible with Remote Connect: Samsung Gear, Fitbit, Garmin are not compatible. 18. Amazon, Alexa and all related marks are trademarks of Amazon.com, Inc. or its affiliates. Certain functions require adequate signal strength and/or smartphone technology/connectivity. Not all Amazon Alexa functionality is available for in-vehicle use. See applicable app for details. Download of the Toyota app and Toyota+Alexa app are both required to begin in-vehicle use of Alexa. Data charges may apply for certain functions. Apps and services subject to change at any time without notice. To learn more, go to <https://www.toyota.com/audio-multimedia>. To learn more about Toyota's data collection, use, sharing and retention practices, please visit <https://www.toyota.com/privacyvts/>. 19. Google is a trademark of Google LLC. 20. iPhone® is a registered trademark of Apple Inc. All rights reserved. 21. Trial length and service availability may vary by model, model year or trim. Service will automatically stop at the end of your trial subscription period unless you decide to continue service. If you do not wish to enjoy your trial, you can cancel by calling the number below. All SiriusXM services require a subscription, each sold separately by SiriusXM after the trial period. **Service subject to the SiriusXM Customer Agreement and Privacy Policy; visit www.siriusxm.com to see complete terms and how to cancel which includes calling 1-866-635-2349.** Some services and features are subject to device capabilities and location availability. All fees, content and features are subject to change. SiriusXM, Pandora and all related logos are trademarks of Sirius XM Radio Inc. and its respective subsidiaries. 22. SiriusXM trial length and service availability may vary by model, model year or trim. 23. JBL® is a registered trademark of Harman International Industries, Inc. 24. Toyota Safety Sense™ effectiveness is dependent on many factors including road, weather and vehicle conditions. Drivers are responsible for their own safe driving. Always pay attention to your surroundings and drive safely. See *Owner's Manual* for additional limitations and details. 25. The Pre-Collision System (PCS) with Pedestrian Detection (PD) is designed to determine if impact is imminent and help reduce impact speed and damage in certain frontal collisions involving a vehicle, a pedestrian or a bicyclist. PCS w/PD is not a substitute for safe and attentive driving. System effectiveness depends on many factors, such as speed, size and position of pedestrian or bicyclist and weather, light and road conditions. See *Owner's Manual* for additional limitations and details. 26. Dynamic Radar Cruise Control (DRCC) is designed to assist the driver and is not a substitute for safe and attentive driving practices. System effectiveness is dependent on many factors including road, weather and traffic conditions. See *Owner's Manual* for additional limitations and details. 27. Lane Departure Alert with Steering Assist is designed to read visible lane markers under certain conditions. It provides a visual and audible alert and slight steering force when lane departure is detected. It is not a collision-avoidance system or a substitute for safe and attentive driving. Effectiveness is dependent on many factors including road, weather and vehicle conditions. See *Owner's Manual* for additional limitations and details. 28. Automatic High Beams operate at speeds above 25 mph. Factors such as a dirty windshield, weather, lighting and terrain limit effectiveness, requiring the driver to manually operate the high beams. See *Owner's Manual* for additional limitations and details. 29. Lane Tracing Assist (LTA) is designed to read visible lane markers and detect other vehicles under certain conditions. It is only operational when DRCC is engaged. See *Owner's Manual* for additional limitations and details. 30. Do not rely exclusively on Road Sign Assist (RSA). RSA is a driver support system that utilizes the vehicle's forward-facing camera and navigation system (when data is available) to recognize certain road signs and provide information to the driver via the multi-information display and/or Head-Up Display. Effectiveness is dependent on road, weather, vehicle and sign conditions. Use common sense when using RSA and do not drive distracted. See *Owner's Manual* for additional limitations and details. 31. May not be compatible with all mobile phones, MP3/WMA players and like models. 32. Airbag systems are Supplemental Restraint Systems and are designed to inflate only under certain conditions and in certain types of severe collisions. To decrease the risk of injury from an inflating airbag, always wear seatbelts and sit upright in the middle of the seat as far back as possible. Do not put objects in front of an airbag or around the seatback. Do not use a rearward-facing child seat in any front passenger seat. See *Owner's Manual* for additional limitations and details. 33. The Tire Pressure Monitor System alerts the driver when tire pressure is critically low. For optimal tire wear and performance, tire pressure should be checked regularly with a gauge; do not rely solely on the monitor system. See *Owner's Manual* for additional limitations and details. 34. HomeLink® and the HomeLink® house icon are registered trademarks of Gentex Corporation. 35. Qi wireless charging may not be compatible with all mobile phones, MP3/WMA players and like models. When using the wireless charging system, avoid placing metal objects between the wireless charger and the mobile device when charging is active. Doing so may cause metal objects to become hot and could cause burns.

DISCLOSURES

36. Do not rely exclusively on the Blind Spot Monitor. Always look over your shoulder and use your turn signal. There are limitations to the function, detection and range of the monitor. See *Owner's Manual* for additional limitations and details. **37.** Do not rely exclusively on the Rear Cross-Traffic Alert system. Always look over your shoulder and use your mirrors to confirm rear clearance. There are limitations to the function, detection and range of the system. See *Owner's Manual* for additional limitations and details. **38.** The Panoramic View Monitor does not provide a comprehensive view of the area surrounding the vehicle. You should also look around outside your vehicle and use your mirrors to confirm surrounding clearance. Environmental conditions may limit effectiveness and view may become obscured. See *Owner's Manual* for additional limitations and details. **39.** At speeds of 9 mph or less, Front and Rear Parking Assist with Automatic Braking (PA w/AB) is designed to assist drivers in avoiding potential collisions with nearby static objects when the vehicle is in Drive or Reverse and approaching crossing vehicles when the vehicle is in Reverse. Do not overly rely on PA w/AB. Always look around outside the vehicle and use mirrors to confirm clearance. Certain vehicle and environmental factors, including an object or vehicle's shape, size and composition, may affect the system's effectiveness. See *Owner's Manual* for additional limitations and details. **41.** SofTex® is a registered trademark of Toyota Motor Sales, U.S.A., Inc. **42.** EV Mode lets you operate solely on battery power at low speeds for short distances and in limited circumstances, such as in a parking garage. Different conditions may prevent or limit usage. See your *Owner's Manual* for limitations and details. **43.** This floor mat/floor liner was designed specifically for use in your model and model year vehicle and SHOULD NOT be used in any other vehicle. To avoid potential interference with pedal operation, each mat/liner must be secured with its fasteners. Do not install a floor mat/floor liner on top of an existing floor mat/floor liner. **44.** Cargo and load capacity limited by weight and distribution. Always properly secure cargo and cargo area. **45.** Toyota strives to build vehicles to match customer interest and thus they typically are built with popular options and option packages. Not all options/packages are available separately and some may not be available in all regions of the country. See toyota.com for information about options/packages commonly available in your area. If you would prefer a vehicle without any or with different options, contact your dealer to check for current availability or the possibility of placing a special order. Color(s) depicted may vary based on multiple factors, including ambient lighting and the format in which it is being viewed (e.g., computer, mobile device or print). **46.** The Bluetooth® word mark and logos are registered trademarks owned by Bluetooth SIG, Inc., and any use of such marks by Toyota is under license. A compatible Bluetooth®-enabled phone must first be paired. Phone performance depends on software, coverage and carrier. **47.** Rated for 12 volts. See *Owner's Manual* for additional limitations and details. **48.** When the system is on, Automatic Electric Parking Brake is designed to automatically engage the Electric Parking Brake under limited conditions. It may not hold the vehicle under all conditions and does not function when the vehicle is in Reverse. Automatic Electric Parking Brake is not a substitute for manual use of the Electric Parking Brake. See *Owner's Manual* for additional limitations and details. **49.** When the system is on, Brake Hold is designed to keep the brakes engaged after the driver brings the vehicle to a complete stop. It may not hold the vehicle under certain conditions and does not function when the vehicle is in Reverse. Brake Hold is not a substitute for safe and attentive driving. See *Owner's Manual* for additional limitations and details. **50.** Vehicle Stability Control is an electronic system designed to help the driver maintain vehicle control under adverse conditions. It is not a substitute for safe and attentive driving practices. Factors including speed, road conditions, weather and driver steering input can all affect whether VSC will be effective in preventing a loss of control. See *Owner's Manual* for additional limitations and details. **51.** Brake Assist is designed to help the driver take advantage of ABS and is not a substitute for safe driving practices. Braking effectiveness also depends on proper vehicle maintenance, tire and road conditions. See *Owner's Manual* for additional limitations and details. **52.** Smart Stop Technology® operates only in the event of certain contemporaneous brake and accelerator pedal applications. When engaged, the system will reduce power to help the brakes bring the vehicle to a stop. Factors including speed, road conditions and driver input can all impact stopping distance. Smart Stop Technology® is not a substitute for safe and attentive driving and does not guarantee instant stopping. See *Owner's Manual* for additional limitations and details. **53.** Whiplash-Injury-Lessening front seats can help reduce the severity of whiplash injury in certain rear-end collisions. **54.** Hill Start Assist Control is designed to help minimize backward rolling on steep ascents. It is not a substitute for safe driving judgment and practices. Factors including speed, grade, surface conditions and driver input can all affect whether HAC will be effective in preventing a loss of control. See *Owner's Manual* for additional limitations and details. **55.** ToyotaCare covers normal factory scheduled maintenance for two years or 25,000 miles, whichever comes first. Certain models require a different maintenance schedule as described in their Maintenance Guide. 24-hour Roadside Assistance is also included for two years, unlimited mileage. Roadside Assistance does not include parts and fluids, except emergency fuel delivery. See Toyota dealer for details and exclusions. Valid only in the continental U.S. **56.** The Rear-Seat Reminder does not sense objects in the rear seat. The Rear-Seat Reminder is designed to recognize a unique rear-door opening pattern that may be consistent with an object being placed in the rear seating area. See *Owner's Manual* for additional details. **57.** The backup camera does not provide a comprehensive view of the rear area of the vehicle and you should also look around the vehicle, using mirrors to confirm rearward clearance. Environmental conditions may limit effectiveness and view may become obscured. See *Owner's Manual* for additional limitations and details.

Toyota strives to build vehicles to match customer interest and thus they typically are built with popular options and option packages. Not all options/packages are available separately and some may not be available in all regions of the country. See toyota.com for information about options/packages commonly available in your area. If you would prefer a vehicle without any or with different options, contact your dealer to check for current availability or the possibility of placing a special order.

Color(s) depicted may vary based on multiple factors, including ambient lighting and the format in which it is being viewed (e.g., computer, mobile device or print).

Some vehicles are shown with available equipment. Seatbelts should be worn at all times. For details on vehicle specifications, standard features and available equipment in your area, contact your Toyota dealer. A vehicle with particular equipment may not be available at the dealership. Ask your Toyota dealer to help locate a specifically equipped vehicle.

All information presented herein is based on data available at the time of posting, is subject to change without notice and pertains specifically to mainland U.S.A. vehicles only. Vehicles shown may be prototypes, shown using visual effects and/or shown with options. Actual models may vary.



Mobility

For Toyota Mobility program details, go to www.toyota.com/mobility or call the Toyota Brand Engagement Center at 1-800-331-4331